

QLSWC

SWING CLAMPS WITH ADJUSTABLE HANDLE

NEW ROHS



[Base/Washer/Clamping Spindle]

Material : S45C steel

Heat treat : Quenched and tempered

Finish : Black oxide

[Body]

Material : SCM440 steel

Heat treat : Carburized-hardened

Finish : Black oxide

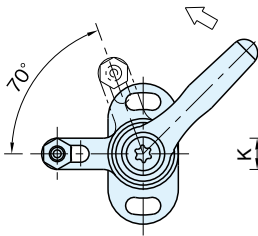
[Handle]

Material : ZDC1 die cast zinc

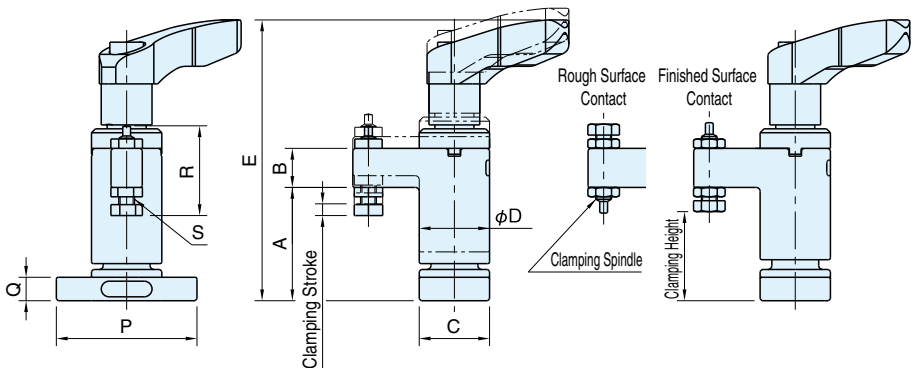
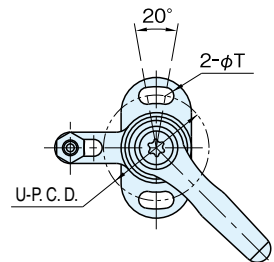
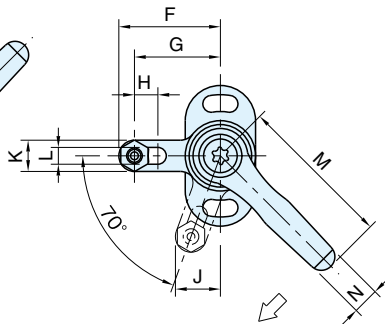
Finish : Coated with paint

- Clamp worked by a screw-locking mechanism which allows providing longer clamping stroke and greater clamping force than a cam-locking mechanism.
- Operated by an adjustable handle that allows for flexible handle positioning.

Counterclockwise Clamping



Clockwise Clamping



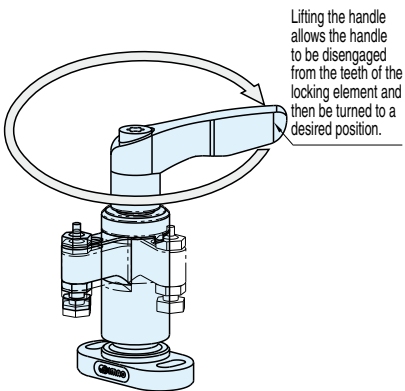
Part Number	Clamping Height *)				Clamping Stroke	A	B	C	D	E	F	G	H	J
	Finished Surface Contact		Rough Surface Contact											
	Min.	Max.	Min.	Max.										
QLSWC-0618KR	21.8	23.8	21.4	23.4	3	29	10	18	18	71.9	26	22	6	11.5
QLSWC-0618KL	(21.8-24.8)	(23.8-26.8)	(21.4-24.4)	(23.4-26.4)										
QLSWC-0823KR	30.3	32.3	31.2	33.2	4	39	14	23	23	97.3	35	30	8	15.3
QLSWC-0823KL	(30.3-34.3)	(32.3-36.3)	(31.2-35.2)	(33.2-37.2)										
QLSWC-1030KR	30.5	37	31.5	38	4	48	18	30	30	122.3	45	37	8	20.7
QLSWC-1030KL	(30.5-34.5)	(37-41)	(31.5-35.5)	(38-42)										
QLSWC-1240KR	34.5	44	37	46.5	5	58	22	40	40	145.7	55	45	8	25.4
QLSWC-1240KL	(34.5-39.5)	(44-49)	(37-42)	(46.5-51.5)										

*) Clamping height can be adjusted. The parenthesised values denote clamping height range.

Part Number	K	L	M	N	P	Q	R	S	T	U	Adjustable Handles	Allowable Operating Load (N **)	Clamping Force (N)	Weight (g)
QLSWC-0618KR	8	4.3	40	7	36	6	22.8	M 4x0.7	4.3	27	FKF6-BR	170	2,000	121
QLSWC-0618KL														
QLSWC-0823KR	10	5.3	65	9.5	45	8	28.5	M 5x0.8	5.3	34	FKF8-BR	170	3,200	276
QLSWC-0823KL														
QLSWC-1030KR	16	8.4	80	11	65	12	45.5	M 8x1.25	8.4	48	FKF10-BR	350	4,500	600
QLSWC-1030KL														
QLSWC-1240KR	20	10.4	95	13	85	15	57	M10x1.5	10.5	64	FKF12-BR	410	6,000	1,225
QLSWC-1240KL														

**) Allowable load to operate the handle.

How To Use



Turning the handle allows the clamp arm to swing for clamping.

Technical Data

